
HBA-100194 (ORDER NO. 100194)

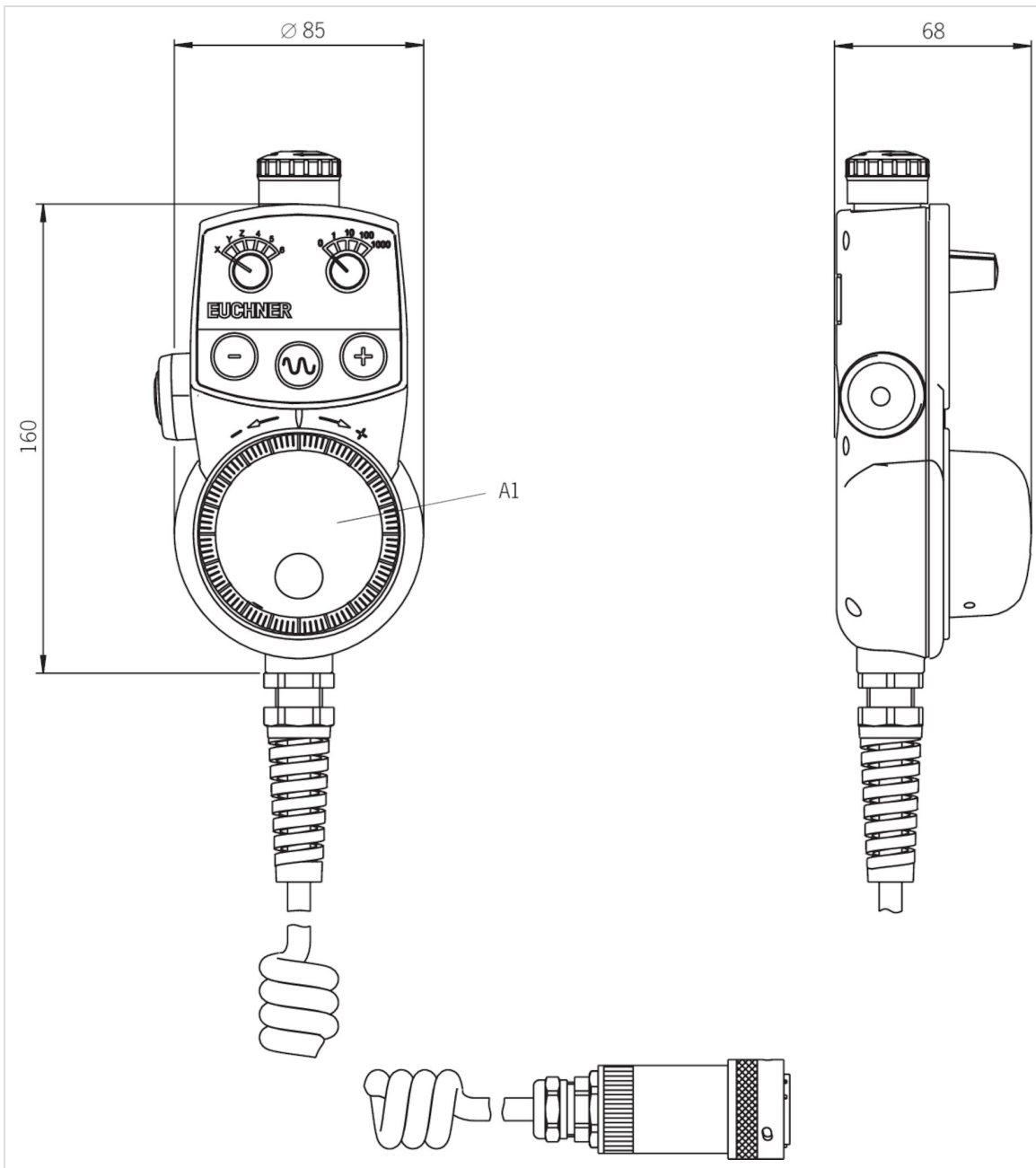
Hand-held pendant station HBA, EMERGENCY STOP device, enabling switch, foil pushbuttons, handwheel, selector switch

- ▶ Handwheel 100 pulses, wear-free magnetic detent mechanism
- ▶ 1 enabling switch, 3-stage, 2 NO contacts each
- ▶ Tamper-proof EMERGENCY STOP device according to EN 13850, dual-channel
- ▶ 1 selector switch with 6 positions (X, Y, Z, 4, 5, 6)
- ▶ 1 selector switch with 5 positions (0, 1, 10, 100, 1000)
- ▶ 3 membrane pushbuttons, 1 NO contact each





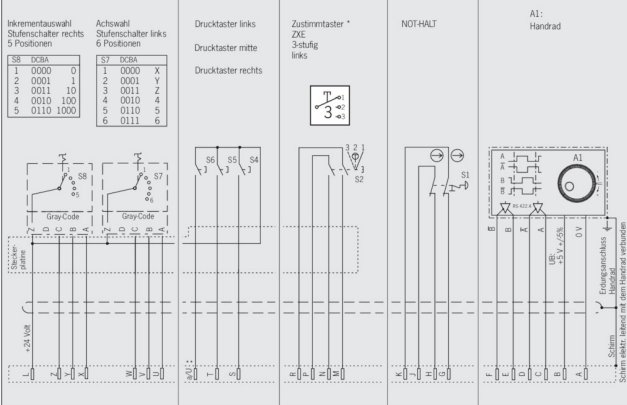


Description

Dimension drawing



Wiring diagram

Ausführung/Artikel	Merkmale					Best. Nr.																																			
	2 Stufenschalter 5 und 6 Positionen	3 Folien- drucktaster je 1 Schließer	1 Zustimmungstaster ZXE 3-stufig	NOT-HALT- Einrichtung	Handrad 100 Impulse																																				
HBA - 100 186 			●		●	100 186																																			
HBA - 100 212 	●		●	●	●	100 212																																			
HBA - 100 213 		●	●	●	●	100 213																																			
HBA - 100 194 	●	●	●	●	●	100 194																																			
Verdrahtungsplan	<p>Inkrementauswahl Stufenschalter rechts 5 Positionen</p> <table border="1"> <thead> <tr> <th>SS</th> <th>DCSA</th> <th>Achswahl Stufenschalter links 6 Positionen</th> <th>S7</th> <th>DCSA</th> </tr> </thead> <tbody> <tr> <td>1</td> <td>0000</td> <td>0</td> <td>1</td> <td>0000</td> </tr> <tr> <td>2</td> <td>0001</td> <td>1</td> <td>2</td> <td>0001</td> </tr> <tr> <td>3</td> <td>0011</td> <td>10</td> <td>3</td> <td>0011</td> </tr> <tr> <td>4</td> <td>0010</td> <td>100</td> <td>4</td> <td>0010</td> </tr> <tr> <td>5</td> <td>0110</td> <td>1000</td> <td>5</td> <td>0110</td> </tr> <tr> <td></td> <td></td> <td></td> <td>6</td> <td>0111</td> </tr> </tbody> </table> <p>Achswahl Stufenschalter links 6 Positionen</p> <p>Drucktaster links Drucktaster mitte Drucktaster rechts</p> <p>Zustimmungstaster * ZXE 3-stufig links</p> <p>NOT-HALT</p> <p>A1: Handrad</p>  <p>* Schaltwegdiagramm siehe Seite 6 ** Steckerkontakt U bei HBA - 100 213 (Steckerbinder 23-polig) Steckerkontakt a bei HBA - 100 194 (Steckerbinder 28-polig)</p>					SS	DCSA	Achswahl Stufenschalter links 6 Positionen	S7	DCSA	1	0000	0	1	0000	2	0001	1	2	0001	3	0011	10	3	0011	4	0010	100	4	0010	5	0110	1000	5	0110				6	0111	
SS	DCSA	Achswahl Stufenschalter links 6 Positionen	S7	DCSA																																					
1	0000	0	1	0000																																					
2	0001	1	2	0001																																					
3	0011	10	3	0011																																					
4	0010	100	4	0010																																					
5	0110	1000	5	0110																																					
			6	0111																																					

Technical data

Approvals



Mechanical values and environment

Shock and vibration resistance	Acc. to EN 60068-2-27/-2-6
Material	Polycarbonate
Weight	
	Net 1,3 kg
Ambient temperature	0 ... 50 °C
Atmospheric humidity	
	(condensation not permissible) max.80 % rH
Degree of protection	IP65 (On the front)
	Acc. to Nema 205-12 (On the front)
Connection	Plug connector (28-pin, metal version)
Cable length	
	coiled 3,5 m (Extended)
Detent positions per revolution	
	Handwheel 100 (Magnetic detent mechanism)

Electrical connection ratings

Operating voltage DC	
	Handwheel 5 V DC -5% ... 5%
Utilization category acc. to EN 60947-5-1	
	DC-13 30V DC / 1A
Switching voltage	
	Selector switch max.15 V
	Enabling switch max.AC/DC 42 V
	Membrane keypad max.AC 25 V max.DC 42 V
Switching current	
	Membrane keypad max.100 mA (Common connection)
	Enabling switch max.100 mA
	Selector switch max.20 mA
EMC protection requirements	
	Acc. to CE EN 61000-6-2, EN 61000-6-4
Type of output	
	Handwheel RS422
Connecting cable	28x0.14mm ² (Screened)
Pulses per revolution	
	Handwheel 2x100
Breaking capacity (VA)	
	Enabling switch max.0,25 VA
	Selector switch max.0,2 VA
	Membrane keypad max.1 VA (Common connection)

Controls and indicators

	Control/indicator
Version	Membrane key
Slide-in label	
Special features	Labeled
Color	-
Switching element	1 NO contact each
Position	See data sheets

	Control/indicator
Version	Selector switch
Slide-in label	
Special features	-
Color	Black knob with marking
Switching element	5-stage, Gray coded, detent angle 22.5°
Position	See data sheets

	Control/indicator
Version	Handwheel
Slide-in label	
Special features	-
Color	Black plastic adjusting wheel
Switching element	-
Position	See data sheets

	Control/indicator
Version	Emergency stop
Slide-in label	
Special features	-
Color	Red-yellow
Switching element	2 positively driven contacts
Position	See data sheets

	Control/indicator
Version	Enabling switches, 3-stage
Slide-in label	
Special features	-
Color	Black
Switching element	2 NO contacts
Position	See data sheets

	Control/indicator
Version	Selector switch
Slide-in label	
Special features	-
Color	Black knob with marking

Switching element	6-stage, Gray coded, detent angle 22.5°
Position	See data sheets

Other

Color	
	Housing Gray RAL 7040
For the approval acc. to UL the following applies	Operation only with UL class 2 power supply, or equivalent measures

Accessories

Function expansion

28-pin short-circuit plug

083458
28POL/METALLAUSFUEHRUNG-
083458

Flange connector, 28-pin

074385
28POL/METALLAUSFUEHRUNG-
074385

Mounting accessories

Holder for HBA



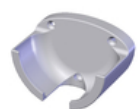
109979
HALTER HBA-109979

- ▶ Plastic holder
- ▶ Black
- ▶ Handwheel can be operated in the holder



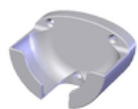
100221
HALTER HBA-100221

- ▶ Plastic holder
- ▶ Black



072935
HALTER HBA M

- ▶ Plastic holder
- ▶ gray
- ▶ Handwheel can be operated in the holder



072828
HALTER HBA072828

- ▶ Plastic holder
- ▶ gray

Contacts

🏠 EUCHNER GmbH + Co. KG
Kohlhammerstraße 16
70771 Leinfelden-Echterdingen

☎ +49 711 7597-0

📠 +49 711 753316

✉ [info\(at\)euchner.de](mailto:info(at)euchner.de)